


SALMONG TUGUNAN

DAKILANG KAPISTAHAN NG PAG-akyat NG ATING PANGINOON

SALMO 47

JEFFREY RAY C. MIGUEL

G Em Cmaj7 Bm C G/D Am/D G




HA-BANG UM - A - AK - YAT ANG DIYOS ANG TAM - BU-LI'Y TU - MU - TU-NOG!

G



VERSE 1 MAG - DI - WANG ANG LA - HAT NG MA - NGA NI - LIK - HA,

C/E Am G/B




PU - MA - LAK - PAK KA - YONG MAY A - WIT AT TU - WA,

Em C D(sus4) D



BI - LANG PA - PU - RI SA DIYOS NA DA - KI - LA!

Em



ANG DIYOS NA PO - ON KA - TA - AS - TA - A - SAN,

C/E Em



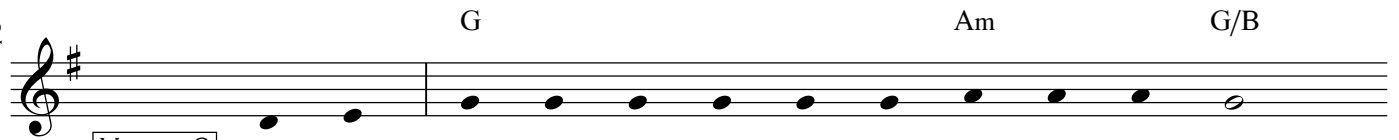
AY DA - KI - LANG HA - RI, DA - PAT KA - TA - KU - TAN

G/B C D(sus4) D



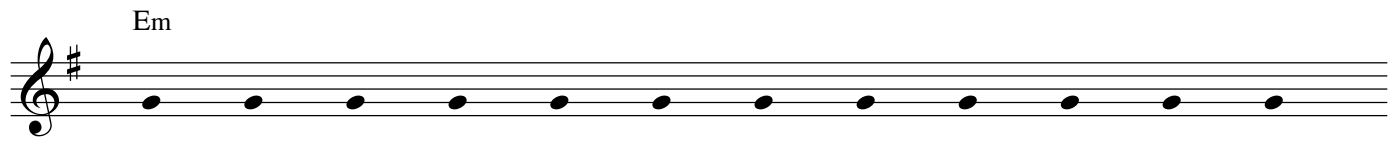
SIYA'Y NAG - HA - HA - RI SA SANG - KA - TA - U - HAN.

2



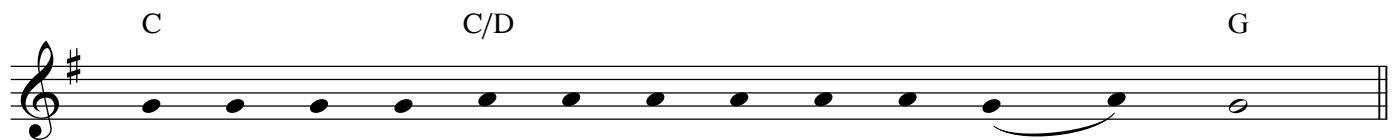
VERSE 2

U - MA - KYAT SA TRO - NO ANG PA - NGI - NO - ONG DIYOS,



Em

HA - TID SA TAM - BU - LING MA - LA - KAS ANG TU - NOG,

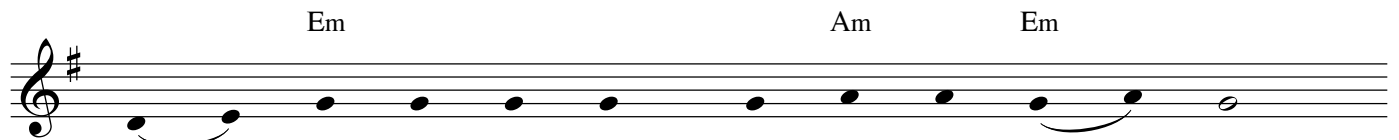


C

C/D

G

MA - SA - YANG SI - GA - WAN ANG I - PI - NAN SU - OB

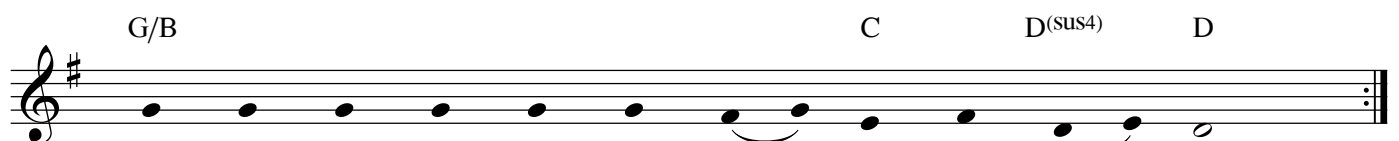


Em

Am

Em

PU - RI - HIN ANG DIYOS, SIYA AY A - WI - TAN!



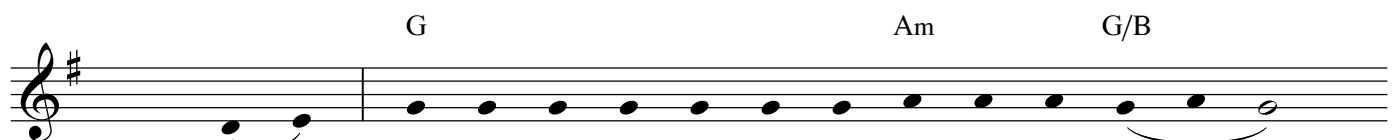
G/B

C

D(sus4)

D

A - WI - TAN ANG HA - RI, SIYA'Y PA - PU - RI - HAN!



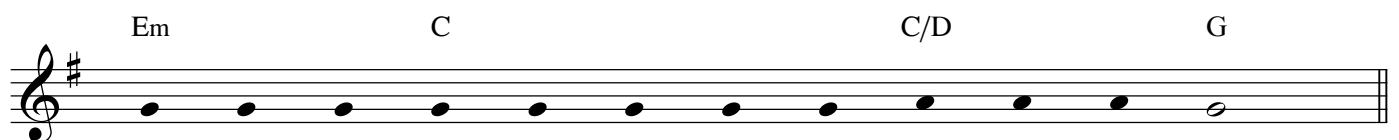
G

Am

G/B

VERSE 3

ANG DIYOS SI-YANG HA - RI NG LA - HAT NG BAN - SA,



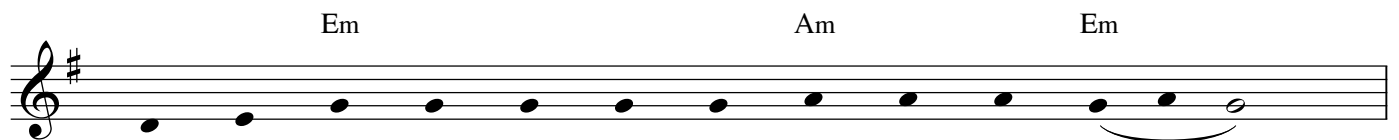
Em

C

C/D

G

A - WI - TA'T PU - RI - HIN NG MA - NGA NI - LIK - HA!

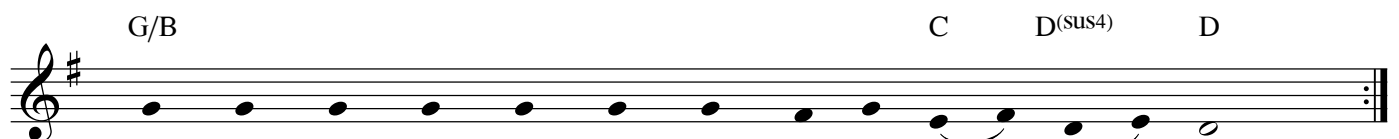


Em

Am

Em

MAG - HA - HA - RI SIYA SA LA - HAT NG BAN - SA



G/B

C

D(sus4)

D

NAG - MU - LA SA TRO - NONG BA - NAL AT DA - KI - LA!